

NUWEIGH®

VEHICLE WEIGHING SYSTEM WEIGH. PRINT. REPORT.

All in the one wireless system!



**COMPLETELY WIRELESS
SYSTEM WITH
LONG BATTERY LIFE!**

SYSTEM INCLUDES:

- 4x Axle Load Pad: MDC-221 #36730
- 4x Axle Load Pad Cases
- Wireless Indicator: MDC-221-1 #36731
- Tow Ball Scale: MDC-216 #36692

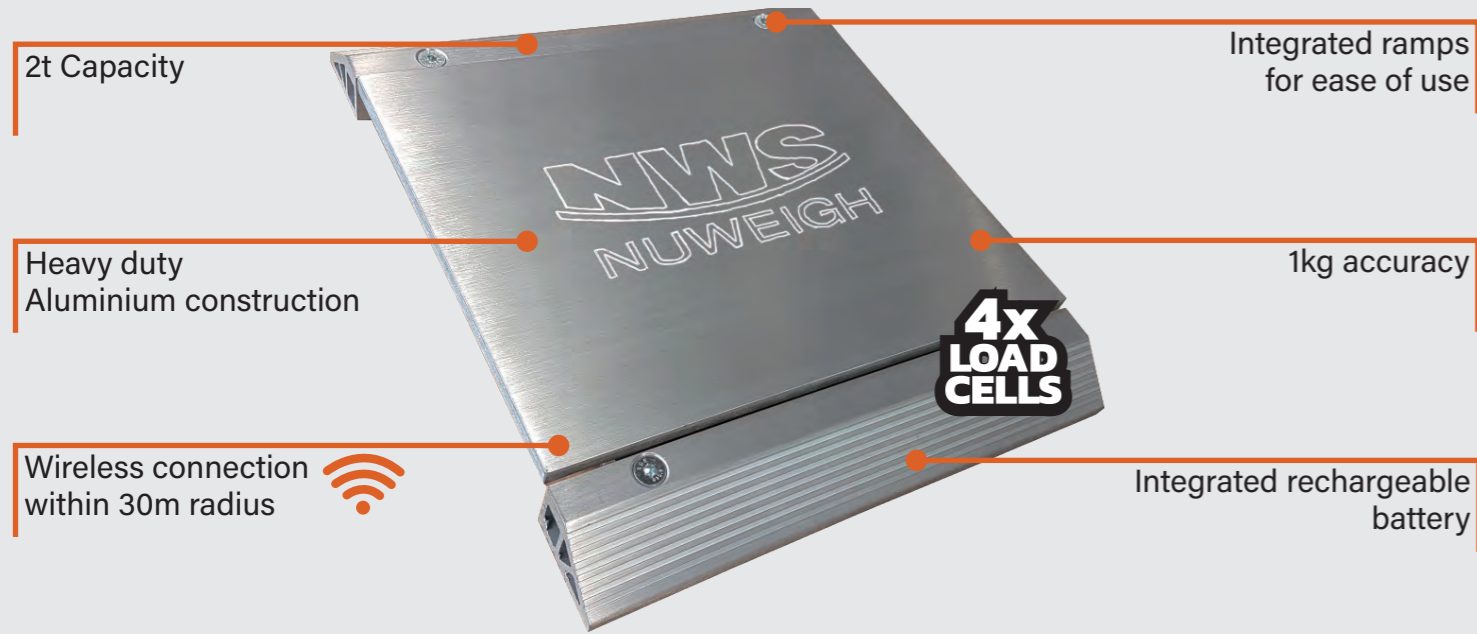
NWS®
NUWEIGH

Distributed by

**HILLS SCALE
SERVICES**
"WEIGH AHEAD" IN AUSTRALIA

WIRELESS AXLE LOAD PAD MDC-221

NUWEIGH



2t Capacity

Integrated ramps for ease of use

Heavy duty Aluminium construction

1kg accuracy

Wireless connection within 30m radius

Integrated rechargeable battery

WIRELESS INDICATOR MDC-221-I

NUWEIGH



Portable water resistant high grade ABS housing

Connect up to 4 axle pads and tow ball weigher

Wireless connection within 30m radius

In-built thermal printer

High definition 7" touch screen display

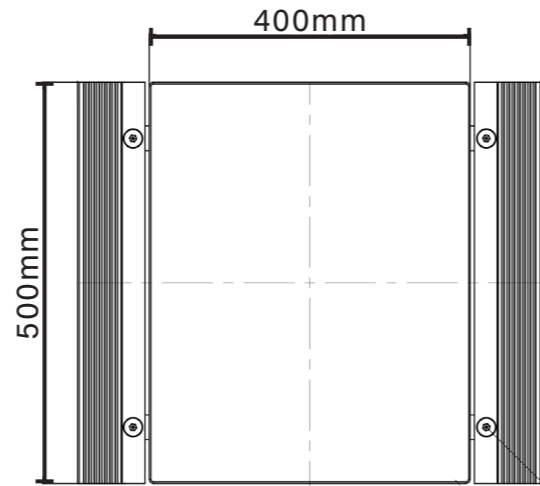
Storage compartment holds stylus

Standard USB storage output for collection of data

FEATURES

- ▶ Aluminium construction is durable in the toughest conditions
- ▶ Weigh pad capacity 2T x 1kg
- ▶ Designed with 4 load cells for accurate readings
- ▶ Entry/exit ramps for ease of use
- ▶ Integrated rechargeable battery lasts up to 40hrs
- ▶ Protective Aluminium case included with each axle pad

DIMENSIONS



SPECIFICATIONS

CAPACITY 2 Tonne

DIVISION 1kg

WEIGH PLATFORM SIZE 500mm x 400mm

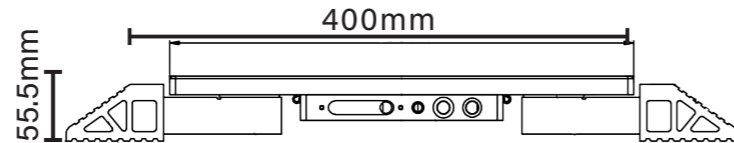
WIRELESS RANGE 30m

BATTERY Rechargeable

CHARGER Power pack included

BATTERY OPERATING TIME Approx. 40hr

PRODUCT WEIGHT 18kg



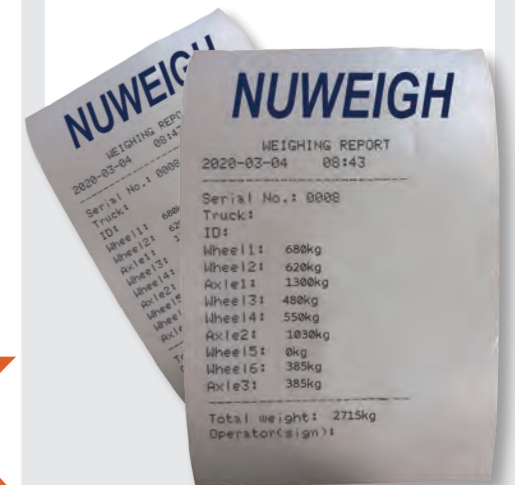
FEATURES

- ▶ Static system with multi-scale display
- ▶ High speed, low maintenance 57mm Thermal Printer
- ▶ Heavy duty illuminated function buttons on wireless control panel
- ▶ Reliable wireless protocol
- ▶ Connects up to 4 Pads and Tow Ball Weigher
- ▶ Ability to read each wheel, axle and total vehicle weights
- ▶ Data can be exported to text file
- ▶ Up to 40 hrs working time with auto switch off function
- ▶ Document and print all weight data
- ▶ Highly compact and portable device

EVERY SCALE IS SUPPLIED WITH
A COMPREHENSIVE CALIBRATION
REPORT SPECIFIC FOR EACH CLIENT

PRINTING TICKET

In-built thermal printer records name, vehicle ID, individual, gross weight, paired & total axle weights.



ALUMINIUM
CARRY CASE
INCLUDED



TOW BALL SCALE

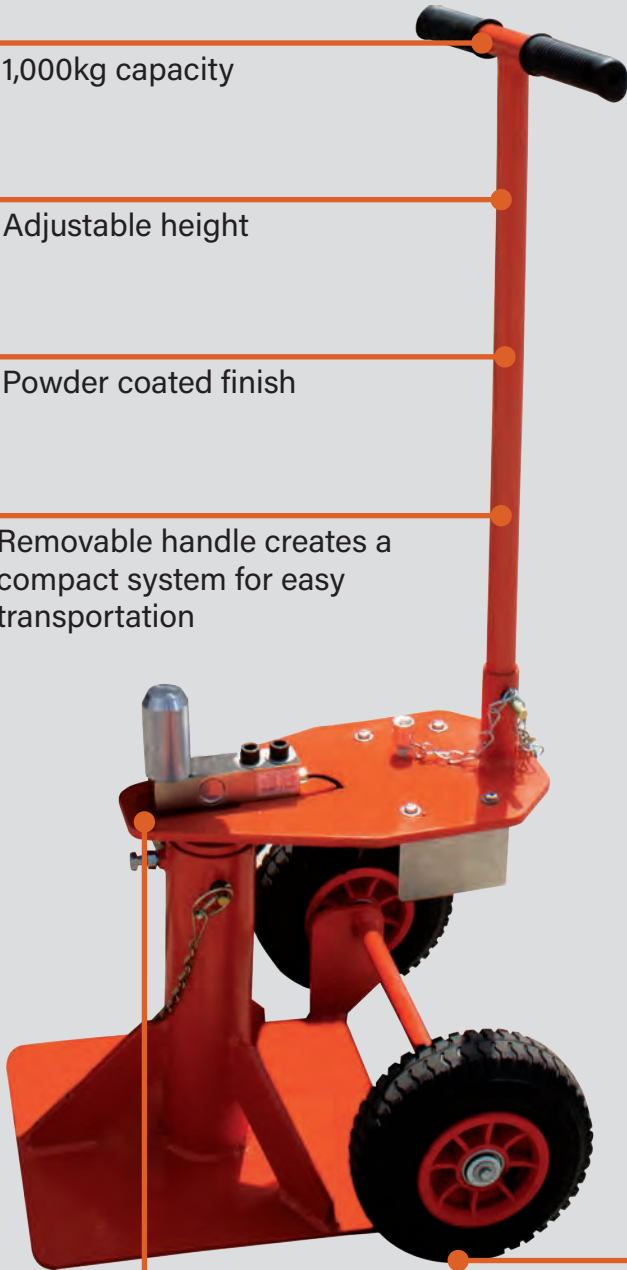
MDC-216

1,000kg capacity

Adjustable height

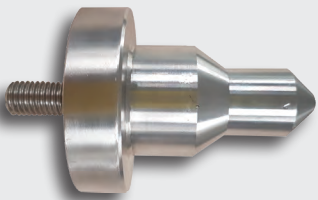
Powder coated finish

Removable handle creates a compact system for easy transportation



Pneumatic wheels for easy positioning

Alternate Tow Ball Pin Available



DO35 Pin suitable for DO35 styled hitches.

NUWEIGH

FEATURES

- ▶ Wireless connection to indicator
- ▶ High tech magnetic activation key
- ▶ Portable and easy to use
- ▶ Adjustable height allows modifications to suit user
- ▶ Quality construction
- ▶ Designed in Australia
- ▶ Industrial rubber handles

SPECIFICATIONS

CAPACITY 1 Tonne

DIVISION 1kg

WIRELESS RANGE 30m

BATTERY Rechargeable

CHARGER 5VDC, 1A

OPERATING TIME Approx. 40hr

OPERATING TEMPERATURE -5°C to 40°C

PRODUCT WEIGHT 22kg

INTELLIGENT POWER MAGNET

Magnet activates transmitter to switch the Tow Ball Weigher on/off.



NWS[®]
NUWEIGH

Distributed by

**HILLS SCALE**
SERVICES
"WEIGH AHEAD" IN AUSTRALIA