

WEIGHT MASTER

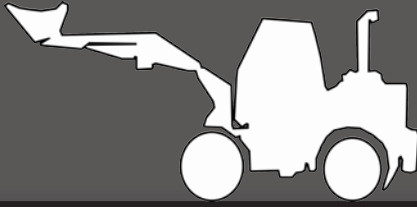
MULTI FUNCTION ONBOARD SCALE

The "WEIGHT MASTER" on-board scale system is our premium product. It has all the features of those expensive imports without the price tag. You can rely on this system to perform accurately and reliably on most forklifts and front end loaders.



SAVE
SAVE
SAVE:

- Improve safety
- Autocal facility
- Low install costs
- Trigger activated
- 1% system accuracy
- Zero (or tare) function
- Weigh and hold function
- Check consignment weights
- Add or subtract loads feature
- Rugged weather proof design
- Overload alarm, eliminate fines
- Reduce trips to the weighbridge
- Dual sensor, speed compensated
- Check incoming/outgoing goods
- Eliminate machinery and racking overload

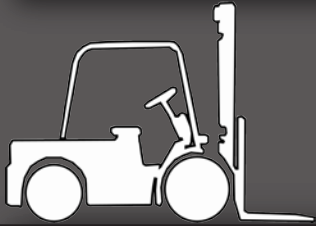


FULL FUNCTION - LOW COST

The weight master instrument has a dual sensor feature and smart software. This allows us to extract the best weighing accuracy from your forklift or front end loader.

Our automatic weight trigger has no moving parts and will operate in the most hostile environments. Trigger systems allow automatic speed compensation, an essential feature on loader systems.

Expansion options include printers, telemetry, alarm safety interlocks and datalogging. With sales exceeding 1000 units you can choose weight master with confidence



STANDARD INSTRUMENT FEATURES

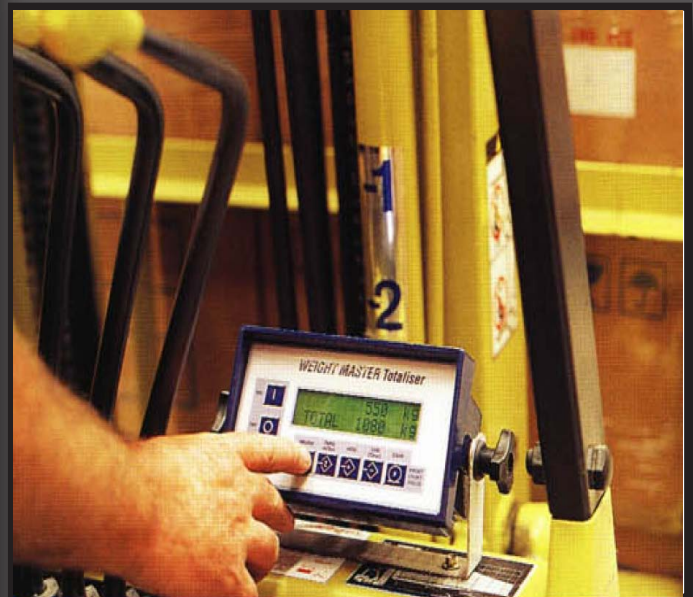
- Simple one touch weigh and hold operation
- Full function totaliser module with add in, subtract out, total and auto add
- Accuracy +/- 1% of forklift capacity
- Printer option with date and time
- 10-30 volt DC (48v optional)
- Auto weigh trigger option
- Add/subtract, total feature
- Rugged electronic design
- Rubber mounted bracket
- No loss of lifting capacity
- Speed compensation
- Overload alarm
- Autocal facility
- Backlit display
- Zero function

OPTIONAL INSTRUMENT FEATURES

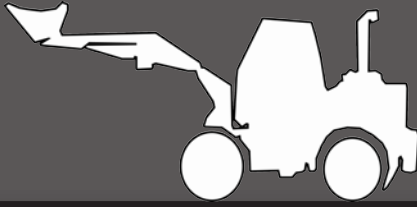
- "Blue Tongue" industrial printer with Date and time information
- Trigger switch to automatically weigh the load as it is lifted
- Power reducer option for electric vehicles (suits 15 to 60v batteries)
- Chain mount loadcells

SPECIFICATIONS

TYPE	Digital electronic with microprocessor control	
CAPACITY	Suitable for most forklifts and loaders	
ACCURACY:	Instrument:	±0.05% of capacity
	System:	±1% of capacity
RESOLUTION	1, 2, 5, 10, 20, 50, 100, 200 selectable	
TEMPERATURE	10°C to 70°C operating range	
SUPPLY:	Voltage:	10v to 30v DC standard 15v to 60v DC with reducer option
	Current:	less than 200mA
HOUSING:	Material:	weatherproof (ip65)
	Size:	250mm (w), 150mm (h), 125mm (d)
	Material:	powder coated aluminium case stainless steel bracket
DISPLAY:	Type:	10mm (h) x 32 digits supertwist alphanumeric LCD with extended temperature range
BACKLIGHT	LED fibreoptic (where fitted)	
WARRANTY	12 month on instrument and sensors 3 months on calibration	
FITTING TIME	four hours typically	
RECALIBRATION	recommended six (6) monthly	
MANUFACTURE	100% Australian made	
PRINTER (when fitted)	TYPE:	60 mm plain paper
	CHARACTERS:	20 per line
	SUPPLY:	12v DC
	CURRENT:	16 to 60v with optional adapter 200 mA standby 1A peak printing
	FIELDS:	date, time, gross weight, nett weight, tare, number of loads, total, grand total and customised header



Hills Scales Pty Ltd
Tel.: (02)8850 4666
Web: www.hillscales.com.au
Email: sales@hillscales.com.au

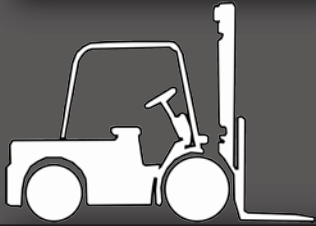


FULL FUNCTION - LOW COST

The weight master instrument has a dual sensor feature and smart software. This allows us to extract the best weighing accuracy from your forklift or front end loader.

Our automatic weight trigger has no moving parts and will operate in the most hostile environments. Trigger systems allow automatic speed compensation, an essential feature on loader systems.

Expansion options include printers, telemetry, alarm safety interlocks and datalogging. With sales exceeding 1000 units you can choose weight master with confidence



STANDARD INSTRUMENT FEATURES

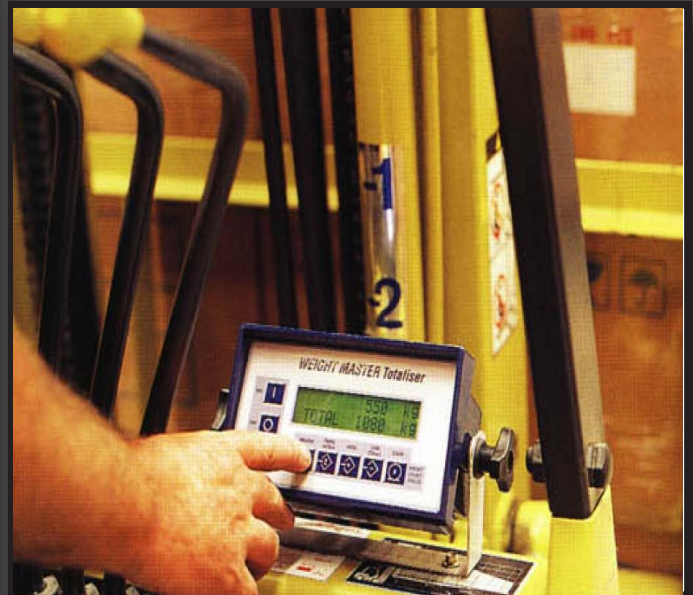
- Simple one touch weigh and hold operation
- Full function totaliser module with add in, subtract out, total and auto add
- Accuracy +/- 1% of forklift capacity
- Printer option with date and time
- 10-30 volt DC (48v optional)
- Auto weigh trigger option
- Add/subtract, total feature
- Rugged electronic design
- Rubber mounted bracket
- No loss of lifting capacity
- Speed compensation
- Overload alarm
- Autocal facility
- Backlit display
- Zero function

OPTIONAL INSTRUMENT FEATURES

- "Blue Tongue" industrial printer with Date and time information
- Trigger switch to automatically weigh the load as it is lifted
- Power reducer option for electric vehicles (suits 15 to 60v batteries)
- Chain mount loadcells

SPECIFICATIONS

TYPE	Digital electronic with microprocessor control	
CAPACITY	Suitable for most forklifts and loaders	
ACCURACY:	Instrument:	±0.05% of capacity
	System:	±1% of capacity
RESOLUTION	1, 2, 5, 10, 20, 50, 100, 200 selectable	
TEMPERATURE	10°C to 70°C operating range	
SUPPLY:	Voltage:	10v to 30v DC standard 15v to 60v DC with reducer option
	Current:	less than 200mA
HOUSING:	Material:	weatherproof (ip65)
	Size:	250mm (w), 150mm (h), 125mm (d)
	Material:	powder coated aluminium case stainless steel bracket
DISPLAY:	Type:	10mm (h) x 32 digits supertwist alphanumeric LCD with extended temperature range
BACKLIGHT	LED fibreoptic (where fitted)	
WARRANTY	12 month on instrument and sensors 3 months on calibration	
FITTING TIME	four hours typically	
RECALIBRATION	recommended six (6) monthly	
MANUFACTURE	100% Australian made	
PRINTER (when fitted)	TYPE:	60 mm plain paper
	CHARACTERS:	20 per line
	SUPPLY:	12v DC
	CURRENT:	16 to 60v with optional adapter 200 mA standby 1A peak printing
	FIELDS:	date, time, gross weight, nett weight, tare, number of loads, total, grand total and customised header



Hills Scales Pty Ltd
 Tel.: (02)8850 4666
 Web: www.hillscales.com.au
 Email: sales@hillscales.com.au